

HOUSING STYLES

ARCHITECTURAL FEATURES

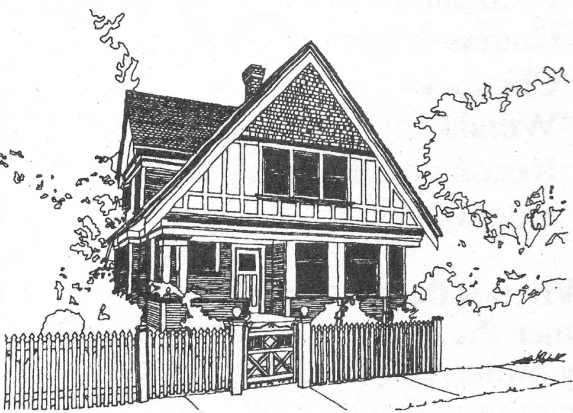
VINTAGE VIC WEST



Queen Anne (1880-1910)

Asymmetrical façade with a steeply-pitched roof

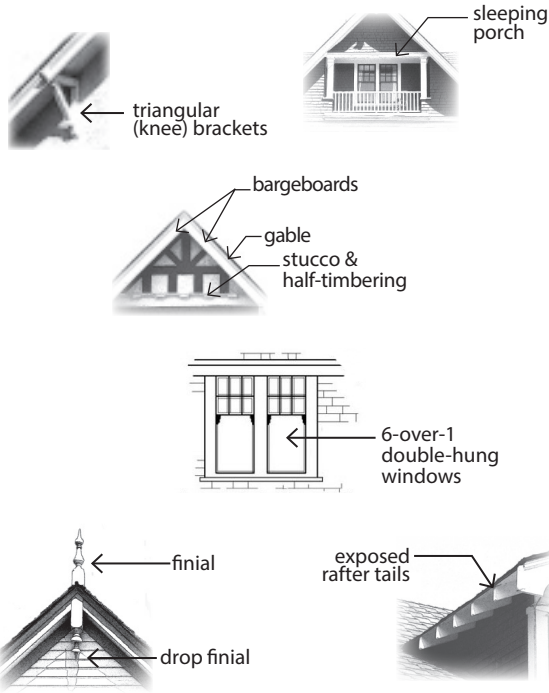
- Typical features:**
- a variety of surface treatments
 - turrets, finials, decorated cornices & bargeboards
 - prominent front porch with spindlework
 - cutaway angled bay windows
 - double-hung windows



Edwardian Vernacular Arts & Crafts (1904-1914)

A common builder's style in Victoria. 1½-storeys, steeply-pitched roof, belt course, asymmetrical main floor, symmetrical upper.

- Typical features:**
- front-gabled
 - side dormers
 - inset corner porch balanced by bay window
 - contrasting cladding at different levels



Victoria Heritage Foundation (VHF) in partnership with the **City of Victoria**, has produced seven *Neighbourhood Heritage Walking Tour* brochures for parts of the **James Bay, North Park, Fernwood, Fairfield, Hillside-Quadra, Burnside & Vic West** neighbourhoods. These are available from Victoria City Hall, the Tourist Info Centre on the Inner Harbour, VHF and locations throughout the neighbourhoods. The VHF website includes the walking tours, complete with photos of all buildings.

Detailed architectural information on Vic West buildings listed on the City of Victoria's Heritage Register, with a great deal of social history & many photographs, old & new, can be found in the **Victoria Heritage Foundation's** publication *This Old House, Victoria's Heritage Neighbourhoods, Volume 1: Fernwood and Victoria West*

All four volumes of *This Old House* are available at Victoria City Hall & local independent booksellers



View from Vic West, with remnants of bridge over tidal area (now filled in) and Songhees longhouses (right). Photo c.1860s. Coll. Ron Greene



Roslyn, 1135 Catherine St. Extant. Photo 1891. Richard Maynard. Esquimalt Archives



Burleith, James & Laura Dunsmuir residence built 1892, destroyed by fire 1931. Photo c.1910. Esquimalt Archives

About Vic West

Victoria West, commonly referred to as Vic West, is a vibrant, historic neighbourhood in the City of Victoria located west of and across the harbour from Downtown. Vic West occupies a peninsula bounded by the scenic Gorge Waterway, Victoria Harbour, and the eastern border of Esquimalt. The Johnson and Bay Street (Point Ellice) bridges link the area with the rest of the City.

Vic West is part of the traditional territory of the Songhees First Nation, or Lekwungen, Coast Salish people. When the Hudson's Bay Co. established Fort Victoria in 1843, the Songhees moved their village across the harbour from the fort, where they lived in plank longhouses and played an important role in the local economy. In 1911 the Songhees were relocated to their present location in View Royal and the site was used for industrial development.

Vic West has long been valued for its direct access to the Inner Harbour and the Gorge Waterway, its views to the Olympic Mountains and meandering shoreline dotted with pocket beaches. These attributes made it a favourite spot for the prominent families of the 1880s and 90s to build their homes. The largest and grandest of the homes built along the shore of the Gorge was *Burleith*. Built in 1892 by James Dunsmuir, son of wealthy coal mine owner Robert Dunsmuir, it was destroyed by fire in 1931.

The wealthy of Vic West lived alongside the working class. Much of the residential and early commercial development occurred between the 1890s and 1913, facilitated by the arrival of streetcar service. Workers were employed by the nearby industries, including the Esquimalt & Nanaimo and BC Electric railways, shipbuilders, lumber mills, breweries, machine shops and foundries.

There was another brief flurry of building activity when the *Burleith* estate was subdivided in the 1930s. Growth after World War II was slow and many of the old houses fell into disrepair or were unsympathetically modernized.

The 1970s saw the beginning of the revitalization of the Vic West neighbourhood. As industries left the area, multi-family residential developments were built, resulting in a population influx and a building and restoration boom that continues to revitalize the neighbourhood.

VICTORIA HERITAGE FOUNDATION

The City of Victoria has a fine record in the field of heritage conservation in Canada. For over 50 years, Victoria has demonstrated leadership in furthering the preservation of our heritage resources. Since 1978, the City of Victoria has offered funding assistance to owners of Heritage-Designated houses, and since 1983, the Victoria Heritage Foundation (VHF) has administered this grants program. Grants are awarded for structural work, seismic upgrading, and rehabilitation and maintenance of exteriors and designated interiors, outbuildings, walls and fences. There are now over 400 Designated houses, the newest being built in 1969; most have received grants. 87 have won Hallmark Heritage Society Awards for rehabilitation. In 1989, the City established Victoria Civic Heritage Trust to extend its successful program of grants to include commercial, institutional, industrial & apartment buildings, and in 1998 the City began a tax incentive program to help fund seismic upgrading in downtown buildings.

If you own or plan to purchase an old house in the City & would like to consider Designating, contact the **City of Victoria**.

For more information about the residential funding program for Designated houses, contact the **Victoria Heritage Foundation**
 ☎ 250 383-4546
 vhf@victoriaheritagefoundation.ca
 www.victoriaheritagefoundation.ca

Researched, written & produced by VHF staff & Education Committee volunteers: Theresa McFarland, Jennifer Nell Barr, & Brigitte Clark



The Victoria Heritage Foundation is funded by the City of Victoria

© Victoria Heritage Foundation, 2023

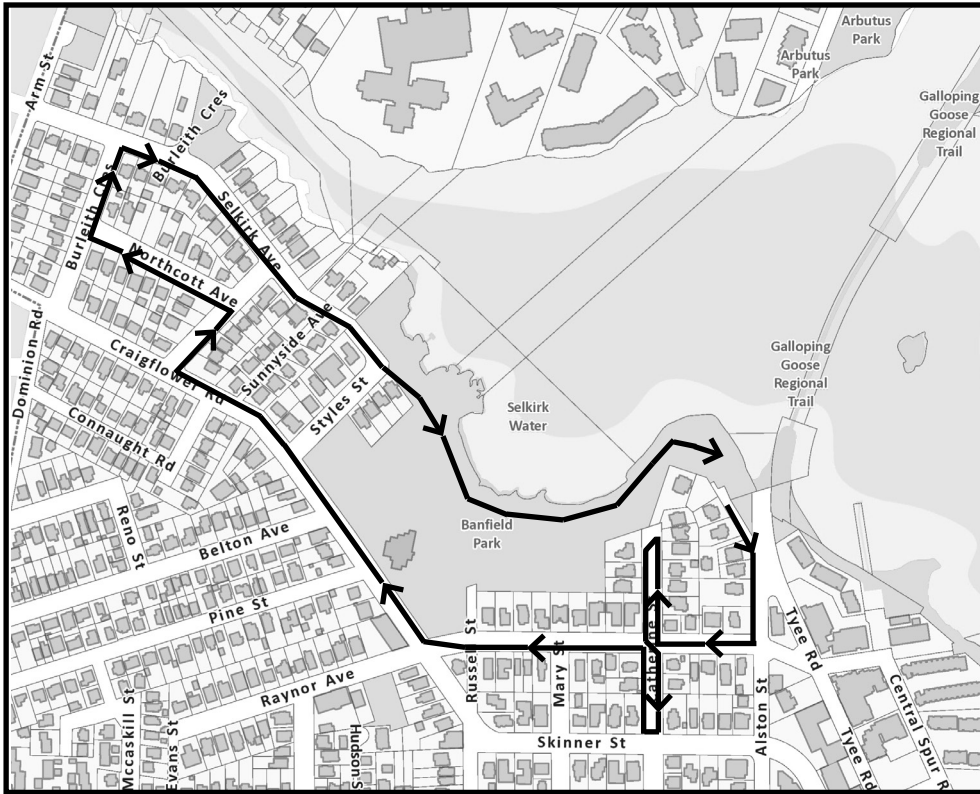
VICTORIA WEST HERITAGE WALKING TOUR

VIC WEST - GORGE

Vic West lies across the harbour from the Downtown core. Many areas have retained their historical character alongside more recent developments. This self-guided walking tour briefly describes some of the historic buildings along the Gorge Waterway, beginning and ending near the Railyards at the end of Tyee Rd. The route covers approximately 2.5 km (1.5 miles). You may want to take a break in Banfield Park or at one of the nearby cafés.



VIC WEST-GORGE HERITAGE WALKING TOUR



D Heritage-designated properties are protected by municipal bylaw. Exterior cannot be altered or building demolished without City approval. Designated houses are eligible for rehabilitation grants from VHF.

R Heritage-registered properties are not formally protected. Heritage values are recognized and may warrant future preservation.

• Please respect residents' privacy

• Most buildings described are not on the City's Heritage Register

Burleigh Wall & Gate Stone wall, gateposts and iron gate marked the entrance to James Dunsmuir's 20-acre estate *Burleigh*. Designed by architect John Teague in 1891, it included electricity, croquet lawns and tennis courts. When Dunsmuir became Lieutenant Governor in 1906 he moved into Government House and the property was subdivided. *Burleigh* stood empty before being destroyed by fire in 1931.

701 Craigflower 1901 gatehouse to the *Burleigh* Estate where Coachman George Winters Jr. and wife Jessie lived. Although sadly neglected, it retains original features including full-width verandah, round window and flattened pediments in gable.

→ TURN RIGHT ON COVENTRY RD

1320 Coventry **D** 1911 Edwardian Vernacular Arts & Crafts with sleeping porch above full-width inset verandah. Original owners were the Davies family, well-known promoters of athletics including aquatics and boxing. A boxing ring was built in the basement for sons Albie and "Jumbo" Davies.

1326 1911 Radford pattern-book house. Side-gabled with inset entry, gabled front & back dormers, front and pair of side angled bays.

← TURN LEFT ON NORTHCOTT AV

529 Northcott **R** 1912 typical Craftsman Bungalow has wide eaves with exposed rafter tails, knee brackets, tapered square posts on shingled piers. Original owner/builder was William H. Benson.

530 Updated 1920 bungalow retains its fine stonework and impressive chimney. Sequoia tree is a remnant from the *Burleigh* Estate. The mansion was situated behind this house.

536 1938 English Cottage with asymmetrical sloping catslide roof over arched entry and triple arched windows, dove-cote-like attic vents. First owner was Norman "Jumbo" Davies, carpenter and well-known boxer (see 1320 Coventry).

542 1939 Norman-Revival Storybook style by designer/builder D. Fair. Conical-roofed round tower, gothic-arched windows and attic vent, rolled roof edges imitating thatch.

539 **D** 1912 Edwardian Vernacular Arts & Crafts with single side dormer. Sleeping porch flanked by pairs of chamfered posts over recessed entry with shallow box bays on either side. Replacement windows.

543 **R** 1912 Colonial Bungalow with a bellcast hipped roof and dormers on all sides. Front dormer sleeping porch and full-width verandah have chamfered posts. Eave brackets are clustered in threes.

→ TURN RIGHT ON BURLEITH CRES

→ TURN RIGHT ON SELKIRK AV

739 Selkirk (SW corner) 1913 Craftsman features a wide gabled front porch with stone piers. Pair of side box bays include triple multi-pane-over-one sash windows.

720 & 728 Architect Graham Johnson designed these mirror-image houses in 1938 for father Walter & son Robert Cross. Both were butchers and owners of Cross' Groceries & Meats that had several locations including one on Craigflower Rd. Robert Cross was mayor of Victoria 1994-99.

723 A well-maintained 1938 one-storey Colonial Revival house. Pedimented porch with small round window is supported by round columns.

561 Unusual 1948 Streamline Moderne style with front chimney and rounded wall faced in stone and glass blocks. Stucco siding imitates wide lapped boards. Built for plasterer William Bartlett of W.S. Bartlett & Sons. William Sr. lived at 714 Selkirk.

524 1910 Arts & Crafts Colonial Bungalow by designer/builder Alex McCrimmon. Hipped roof and dormer have exposed rafter tails. The Gorge-facing side has a large inset verandah.

516-18-20 **D** A handsome 1910 Edwardian Vernacular Arts & Crafts by architect C. Elwood Watkins for Florence & Capt. Thomas H. Brown. They lived in a similar house at 1127 Catherine before moving here. House is 2½ storeys on water side with another sleeping porch.

509 Now stuccoed, this 1912 house has its original double-hung windows in groups of three, inset entry and pair of box bays sheltered by a hipped roof.

504 Parts of 1892 *Devoran* Cottage are still evident towards waterfront. Built by shipbuilder Richard F. Stephens, who operated Sunnyside Yacht Works here 1892-1938. A boatyard business continues next door.

↑ CONTINUE ON PATH THROUGH BANFIELD PARK

Bond's Beach is where realtor William Bond lived until 1919 in his waterfront house. Nearby concrete steps are remnants of the property. Floats and diving boards on the beach below were popular with local children.

Selkirk Trestle: Spanning the Gorge Waterway, the Selkirk Trestle was built in 1918 for the Canadian Northern (later National) Railway. Disused for many years, it is now part of the popular Galloping Goose Regional Trail network.

RETURN TO START

↑ START AT THE END OF ARTHUR CURRIE LANE

From here you can catch glimpses of the back of *Roslyn* (1135 Catherine St) including the conical "witch's-hat" tower.

1140 Arthur Currie **D** *Maplewood* (cover photo) 1891 by architect John Teague for Beaumont & Louisa Boggs, features a 3-storey angled, pedimented box bay, paired eave brackets, decorative gable shingles, Queen Anne windows and wrap-around verandah.

1114 **D** *Annesley*, an 1892 Queen Anne cottage has hipped roof combined with three asymmetrically placed gables over cutaway bay windows. Front porch with turned columns and spindlework frieze, and diamond-pattern shingling in front gable. General Sir Arthur Currie, one of Canada's greatest war heroes, lived here before he left for WW I.

→ TURN RIGHT ON RAYNOR AV

203 Raynor **D** *Bankview* by architect A.C. Ewart is an 1894 Queen Anne with hipped roof & full-height gabled bay window, wrap-around verandah and an upper enclosed, angled balcony.

202 **D** 1894 Queen Anne with a variety of patterned wood shingles and handsome corner brackets on the ground floor bay window and porch.

212 **D** In 1906 architect J.C.M. Keith designed this house featuring a gabled roof with projecting boxed-in eaves and a large gabled roof dormer. First owner George Michell was a machinist and owner of a hardware company.

→ TURN RIGHT ON CATHERINE ST

The 1000 & 1100 blocks of Catherine St and the north end of Arthur Currie Lane are in a Heritage Conservation Area. Among the heritage houses are some newer infill houses in a historic design. Can you spot the difference?

1109 Catherine **D** *Rose Cottage*, a Queen Anne house built 1890 for Capt. William & Julia Homes, was expanded in 1905 by architects Thomas Hooper & C. Elwood Watkins to include the left bay and upper balcony with round columns, shingled arch and gable, with large brackets under bargeboards.

1111-15 **D** Designed 1907 by architects Thomas Hooper & C. Elwood Watkins. The house has a paneled front door with transom, 6-over-1 double-hung windows, a bellcast hipped roof and rectangular eave brackets. The original stucco cladding was specified following a fire that destroyed the earlier 1896 house.

1127 **D** 1906 Edwardian Vernacular Arts & Crafts by architects Thomas Hooper & C. Elwood Watkins. Recessed corner entrance and a second-level balcony, both with Classical Revival Tuscan columns. Leaded-glass windows with a smaller sash above. Original shingle siding covered by stucco.

1131 **D** *Roseleigh*, a 1904 Edwardian Queen Anne cottage with hipped roof, asymmetrically placed cutaway bay and front porch with turned columns and spindlework frieze. Italianate features include triangular front gable pediment and cornice brackets. House was moved here in 1987 from Pandora Av.

1135 **D** *Roslyn*, Victoria's most ornate Queen Anne residence, was built in 1890 from George F. Barber's pattern-book design No 60 for A. Gray, owner of Albion Iron Works. The house became derelict by the 1960s until it was rehabilitated in the 1970s. This coincided with the beginning of the neighbourhood's revitalization. Note original gateposts.

↪ TURN AROUND & HEAD BACK UP CATHERINE ST

1116 **D** Built 1884, *Chichester Villa* was moved here in 1994 from Burdett St. It features ornate Italianate eave brackets and porch detailing. Two dormers, one in the front and one on the right, feature Palladian-like windows and sunburst decorations in Queen Anne style.

↑ CROSS RAYNOR ST, CONTINUE ON CATHERINE ST

1021 Catherine **D** 1903 Edwardian Vernacular Arts & Crafts house, by owner/builder George Butts, has a cross-gabled wing on the left side in place of the usual large roof dormer. Recessed corner front porch has Classical Revival round columns.

1017 **D** Classic 1913 Edwardian Vernacular Arts & Crafts house by designer/builder D.H. Bale has stucco half-timbered and shingled front gable with dentil moulding frieze.

photo pre-1913, coll. Kelso Reed



225 Skinner **D** 1890 Queen Anne cottage with hipped roof and two side gables. Details include cutaway bays, colourful transom window and sunburst pattern on corner brackets.

↪ TURN AROUND & HEAD BACK DOWN CATHERINE

1004 Catherine **D** 1900 Vernacular Queen Anne with drop siding, sawtooth shingles and flared stringcourse. First owner Henry Brackman left Prussia to join the Cariboo gold rush. He later formed Victoria's successful Brackman-Ker Milling Co.

1014 **D** Originally one-storey and side-gabled when built in 1892; 1905 addition. Vernacular Queen Anne features dating from the original include front and side cutaway bay windows with fancy shingles in the gables.

photo 1899, coll. Bette MacDonald



1020 **D** *Montview*, 1899 Queen Anne with fancy shingles, small-paned art-glass windows, gingerbread brackets and porch detailing. Originally included a small tower on the left side. Built for John & Letty Ann Cherry.

← TURN LEFT ON RAYNOR AV

402 Raynor **R** Despite several alterations, this 1891 Queen Anne cottage retains its identical cutaway bays with elaborate frieze band details.

→ TURN RIGHT ON CRAIGFLOWER RD

The arrival of the No. 5 streetcar on Craigflower Rd in 1906 led to a boom in house construction and shops along the major stops. The streetcar went to a loop at the popular BC Electric Gorge (now Kinsman) Park with its Japanese Tea Gardens. Streetcar was replaced by bus in 1947.

414-24 Craigflower Architect Jesse Warren designed this 1913 commercial block with stores and upper apartments. Façade reclad with shingles but retains most of its original windows and inset entries. Early shops included a druggist, dry goods, hardware and Cross' Meats (see 720 & 728 Selkirk Av).

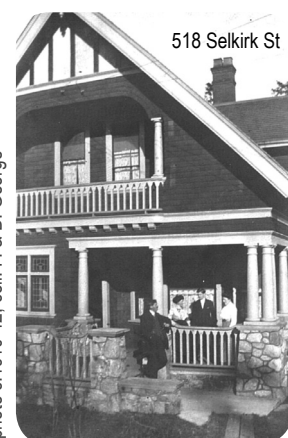
Banfield Park was created in the 1950s and named in honour of Charles Banfield (see 642 Craigflower Rd), local alderman and King's (now Queen's) Printer.

528-30 1898 Victorian house with attached store was Craigflower Grocery & Post Office. Original siding covered in asbestos.

642 1913 home of Charles Banfield, King's Printer. Edwardian Arts & Crafts clad in shingles with an upper recessed balcony, bracketed box bay on lower right.

695 Built for Wm B. Smith in 1899, owner of Coach & Horses Hotel on Esquimalt Rd. Despite stucco and many alterations, some original details remain; porch brackets & spindles and multi-pane windows in the square corner tower.

photo c. 1910-12, coll. P. & D. George



518 Selkirk St

509 Now stuccoed, this 1912 house has its original double-hung windows in groups of three, inset entry and pair of box bays sheltered by a hipped roof.

504 Parts of 1892 *Devoran* Cottage are still evident towards waterfront. Built by shipbuilder Richard F. Stephens, who operated Sunnyside Yacht Works here 1892-1938. A boatyard business continues next door.